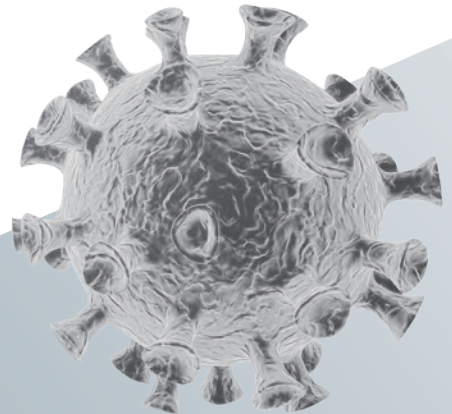




WANTAI SARS-CoV-2 IgM ELISA

*Developing Scientifically
Focusing on the Health*

COVID-19



For more information:
wtexport@ystwt.com



Sensitivity: 86.09%
Specificity: 99.35%
Incubation time: 30'+30'+15'
Specimen volume: 10 μ l

Clinical studies in China

Prospective clinical evaluation was conducted at four hospitals in China during the 2020 COVID-19 outbreak. Samples from total of 572 cases were tested among which 266 were confirmed (China COVID-19 diagnosis protocol, including China CFDA approved PCR tests), and 306 were COVID-19 excluded cases.

Clinical trial centers	Confirmed	Excluded	Total
Academy of Military Medical Sciences	12	0	12
Shenzhen Third People's Hospital	173	33	206
Zhejiang University	81	273	354
Total	266	306	572

Sensitivity and specificity of Wantai SARS-CoV-2 IgM ELISA

Evaluation results		Confirmed/ excluded SARS-CoV-2 results		Total
		Confirmed	Excluded	
Wantai	Positive	229	2	231
	Negative	37	304	341
Total		266	306	572

Sensitivity: **86.09%** 86.09%

Specificity: **99.35%** 99.35%

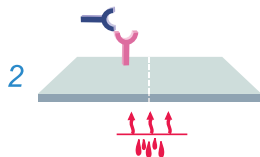
Overall agreement: **93.18%** 93.18%



Principle and Procedures



- Microwell strips pre-coated with anti-IgM capturing antibodies



- Add 100µl of diluent and 10µl of specimens/ Controls Incubation at 37 °C for 30 min



anti-IgM capturing antibodies

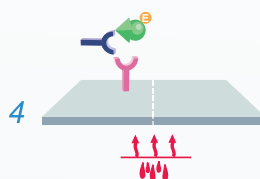
SARS-CoV-2 IgM antibody



HRP-conjugated SARS-CoV-2 antigen

3

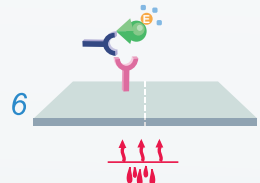
5 Wash cycles



- Add 100µl of HRP-Conjugate Incubation at 37 °C for 30 min

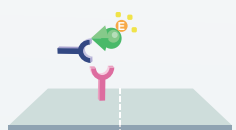
5

5 Wash cycles



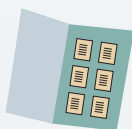
- Add 50µl of Chromogen Solution A and 50µl of Chromogen Solution B Incubation at 37 °C for 15 min

7



- Add 50µl of Stop Solution

8



- Read by single wavelength 450nm or dual wavelength 450/600~650nm

Ordering Info

Cat.	Product	Detection	Specimen	Pack size
WS-1196	WANTAI SARS-CoV-2 IgM ELISA	IgM Antibody	Serum/Plasma	96T/kit

Beijing WANTAI Biological Pharmacy Enterprise Co., Ltd.