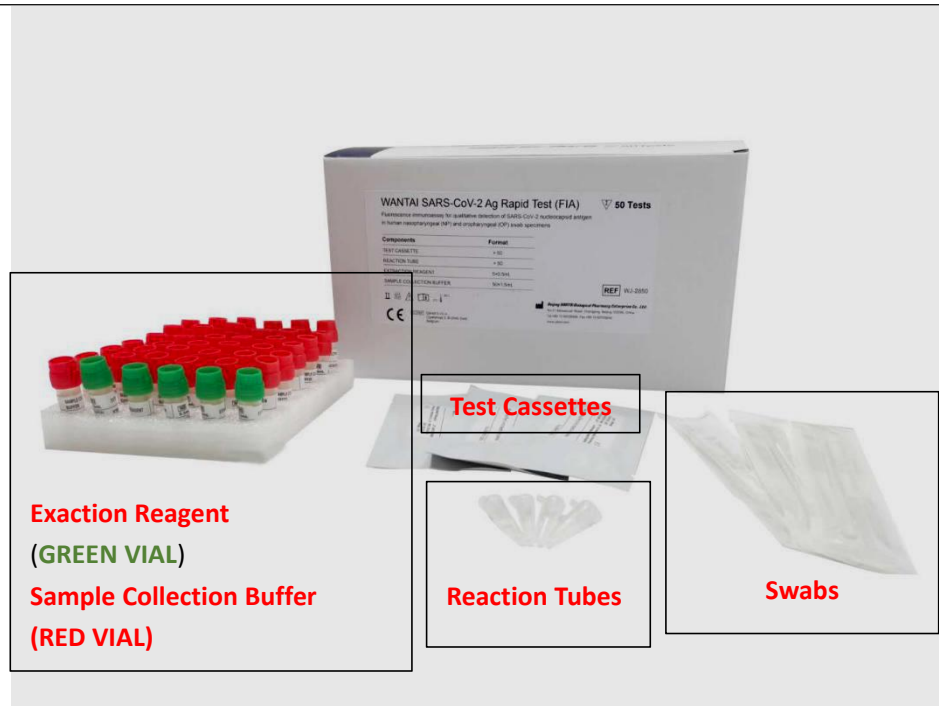


WANTAI SARS-CoV-2 Ag Rapid Test (FIA) WJ-2810, WJ-2850



Components	WJ-2810	WJ-2850
Test Cassette	x10	x50
Reaction Tube	x10 vials	x50 vials
Extraction Reagent	0.5mLx1 vial	0.5mLx5 vials
Sample Collection Buffer	1.5mLx10 vials	1.5mLx50 vials

Step.1

Turn on the **RTR-FS100**



Step.2

Use the swab to collect **NP or OP samples.**



Step.3

Insert the swab into the **Sample Collection Buffer** vial. Rotate several times against the inner wall of the tube to dissolve the sample in the solution as much as possible. Finally snap the head of the swab and leave it in the tube.



Step.4

IMPORTANT!

Before you proceed to **Step.5**, turn the **sample collection buffer** vial up and down 3-4 times to fully mix the **sample collection buffer**, or the VTM containing the patient sample.



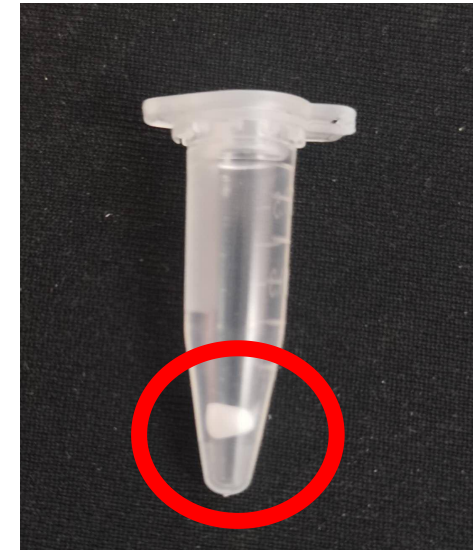
Open the **Reaction Tube**. Add **80 μ L** of sample from the **sample collection buffer** vial into the **Reaction Tube**.



Step.5

! IMPORTANT !

The reaction **Reaction Tube** contains lyophilized immuno-fluorescence particles granule . Before adding the sample, please make sure that the granule has not fallen out from the vial when opening the vial's cap.



Step.6

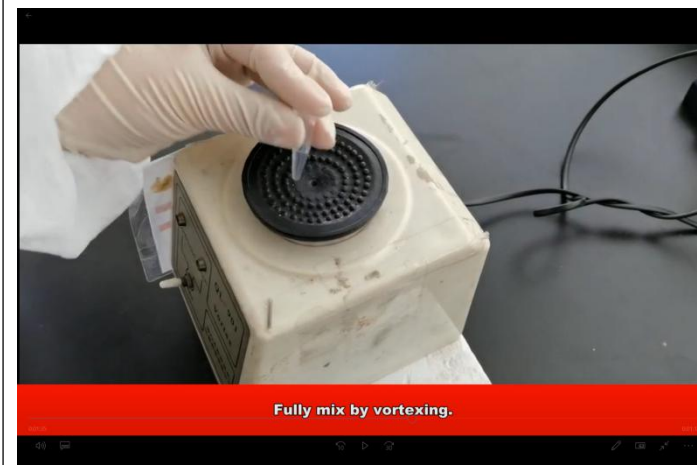
Add **20 μ L** of **Exaction Reagent** (the **GREEN VIAL**) into the **Reaction Tube**.



Step.7

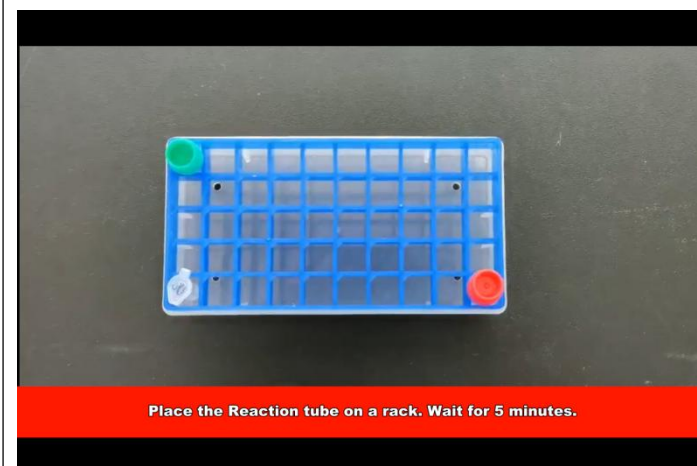
! IMPORTANT!

Before you proceed to Step.8, **Mix** the **Reaction Tube** by vortexing

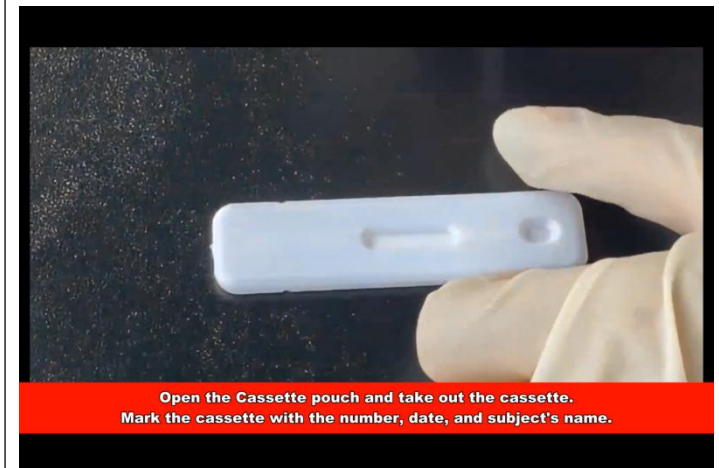


Step.8

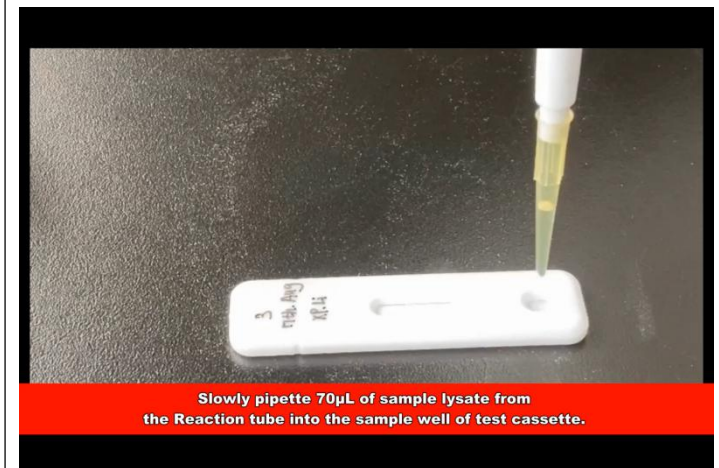
Place the **Reaction tube** on a rack for **5 min.**



Step.9 Take out the **Cassette** and place it on a flat surface.



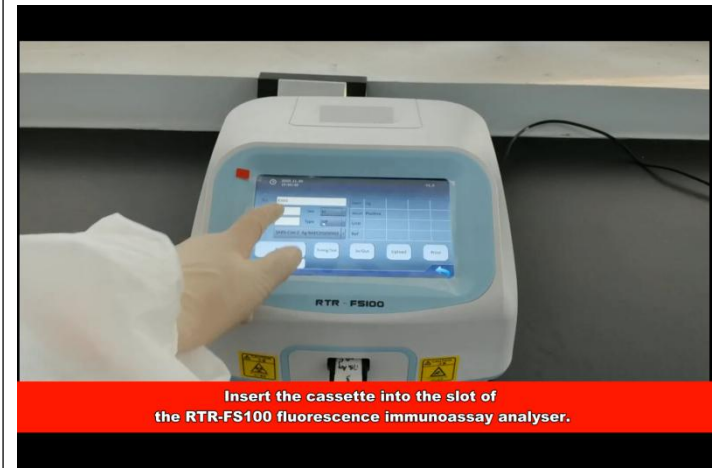
Step.10 Pipette **70 μ L** of sample from the **Reaction tube** into the **cassette**.



Step.11 Wait for **15 min**



Step.12 Insert the **cassette** into the slot of the RTR-FS100



Step.13 Press **“Read”** to measure the fluorescent signal. Print or record the test results.

