

Another Innovative Test Designed by WANTAI

ELISA for **Antigens** to COVID-19



For nasopharyngeal (NP), oropharyngeal (OP) swab specimens
and serum or plasma samples

WANTAI

Leading infectious diseases
diagnostic test manufacturer

Your Global Partner in IVD



WANTAI SARS-COV-2 Ag ELISA is intended for detection of SARS-CoV-2 **nucleocapsid antigen** in **nasopharyngeal, oropharyngeal** swab specimens, and **serum** or **plasma samples**.

The kit is used for **mass** screening of patients suspected for infection with SARS-CoV-2 virus, and as an aid in the diagnosis of the coronavirus disease 2019 (COVID-19).

Performance Data

The performance of WANTAI SARS-COV-2 Ag ELISA was established on a panel of 114 swabs from COVID-19 patients collected.

Comparison between RT-PCR and WANTAI SARS-COV-2 Ag ELISA on patients with RT-PCR Ct≤30

WANTAI \ PCR	Positive (≤30Ct)	Negative	Total
Positive	14	0	14
Negative	1	67	68
Total	15	67	82
Sensitivity	93%		
Specificity	100%		
PPV	100%		
NPV	99%		

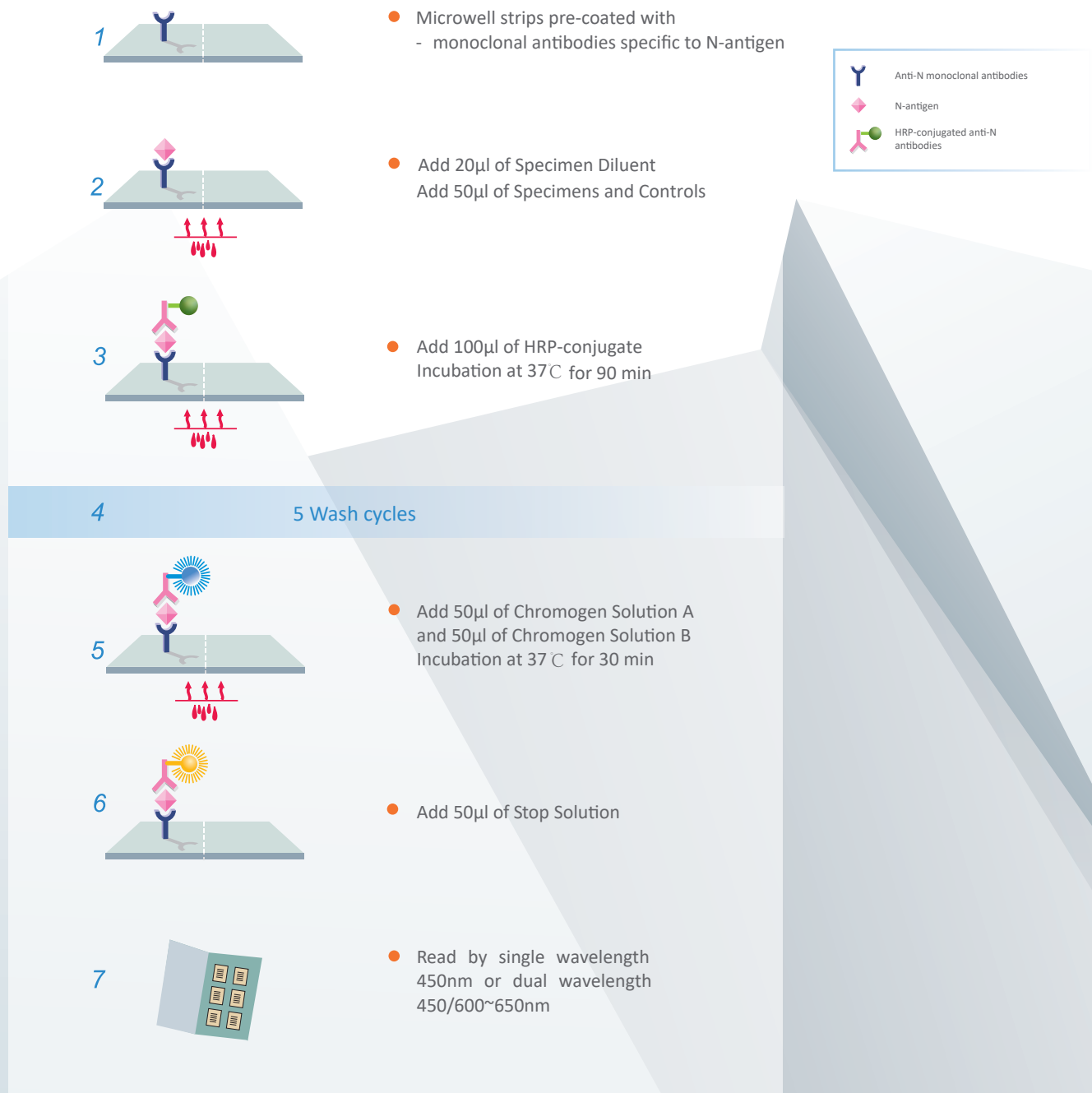
Comparison between RT-PCR and WANTAI SARS-COV-2 Ag ELISA on patients with RT-PCR Ct≤35

WANTAI \ PCR	Positive (≤30Ct)	Negative	Total
Positive	25	0	25
Negative	5	67	72
Total	30	67	97
Sensitivity	83%		
Specificity	100%		
PPV	100%		
NPV	76%		

Comparison between RT-PCR and WANTAI SARS-COV-2 Ag ELISA According to Days from Onset of Symptoms

WANTAI \ PCR	Within 7 days of symptoms onset	After 7 days of symptoms onset
Positive	17	6
Negative	4	14
Total	21	20
Sensitivity	81%	30%

Principle and Procedures



Ordering Info

Cat.	Product	Detection	Specimen	Pack size
WS-1496	SARS-CoV-2 Ag ELISA	Antigen	OP/NP swabs; Serum/Plasma	96T/kit